



HILTON HEAD ISLAND AIRPORT Phase 1 Terminal Improvements

July 31, 2025
Stakeholder Update



HILTON HEAD ISLAND
— AIRPORT —

hiltonheadairport.com

KEY WORK ITEMS ACCOMPLISHED

(July 1 – July 31)

- Roof installation, dried in, roof complete
- Interior wall framing 90%, mostly high ceiling
- Exterior Oyster shell finish 90% complete
- Sheetrock installation 90%, mud and sanding, high ceiling remains
- Interior water/HVAC/electrical/ Fire suppression final connection phase
- Final drive lanes paving complete; paint striping next
- Sidewalk bollards installed, prep for bike racks, flag poles
- TSA offices painted, bathrooms tile work complete, fixture install
- Interior ceiling work
- Jet bridge delivery early-mid Oct

PROGRESS PHOTOS

FRONT EXTERIOR VIEW



PROGRESS PHOTOS

INTERIOR VIEW



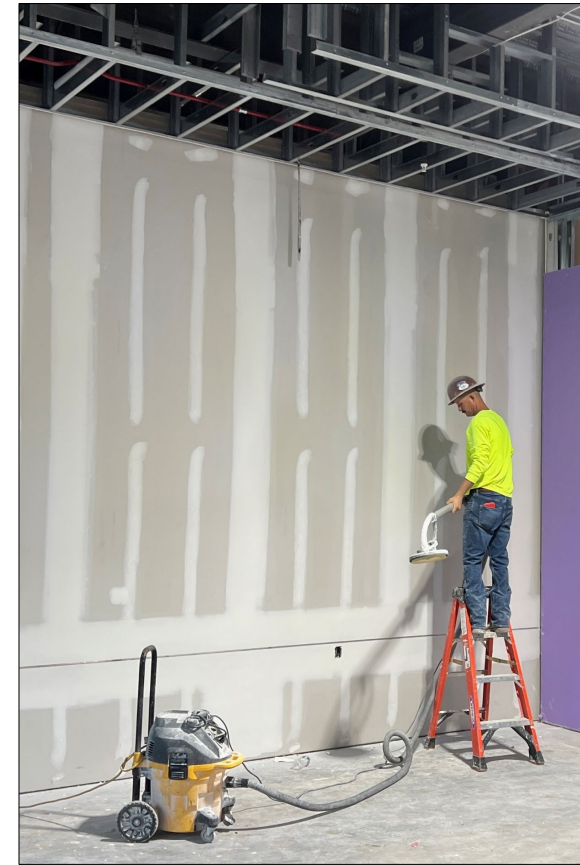
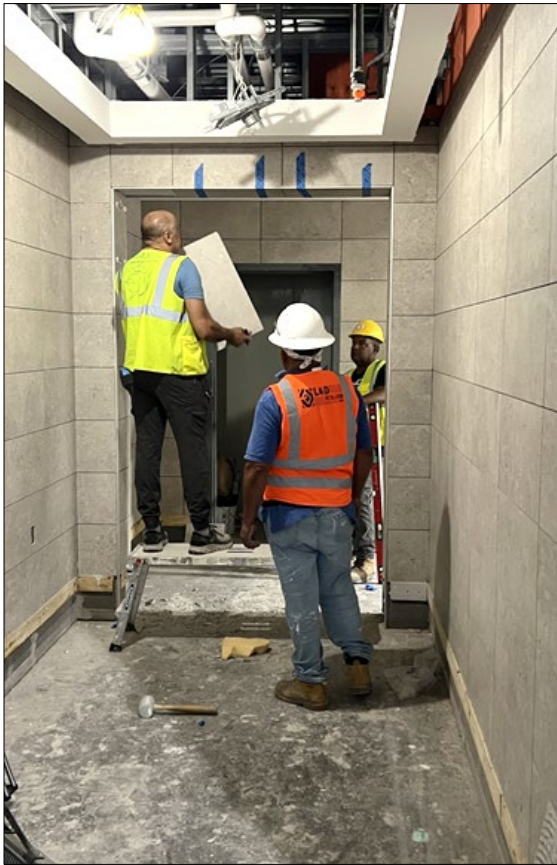
PROGRESS PHOTOS

REAR VIEW



PROGRESS PHOTOS

INTERIOR WORK



MILESTONE SCHEDULE


HHIA-016 - Hilton Head Island Airport Terminal Improvements 2025 May Update																																				
Activity ID	Area	Activity Name	Original Duration	Remaining Duration	Start	Finish	Free Float	Total Float	2024														2025													
									S	Oct	N	D	Jan	F	M	Apr	M	Jun	Jul	A	S	Oct	N	D	Jan	F	M	Apr	M	Jun	Jul	A	S	Oct	N	
Milestones			658	208	14-Sep-23 A	13-Apr-26	0	-31																												
Contract Milestones			943	28	14-Sep-23 A	13-Apr-26	0	-45																												
No Area			943	28	14-Sep-23 A	13-Apr-26	0	-45																												
CM1000		Owner Contract Execution	0	0	14-Sep-23 A				Owner Contract Execution																											
CM1010		Notice to Proceed	0	0	01-Feb-24 A				◆ Notice to Proceed																											
CM1020		Substantial Completion	0	0		16-Mar-26	0	-45																												
CM1030		Final Completion	0	0		13-Apr-26	0	-45																												
Project Milestones			426	65	22-Jan-24 A	18-Sep-25	0	92																												
No Area			426	65	22-Jan-24 A	18-Sep-25	0	92																												
PM1000		New Temporary Airside Access Gate #1A Open	0	0		22-Jan-24 A			◆ New Temporary Airside Access Gate #1A Open																											
PM1010		Existing Airside Gate #1 Closure	0	0	23-Jan-24 A				◆ Existing Airside Gate #1 Closure																											
PM1020		Employee & Cell Phone Lot Closed	0	0	05-Feb-24 A				◆ Employee & Cell Phone Lot Closed																											
PM1030		Existing Baggage Canopy/Entrance Closure	0	0	26-Feb-24 A				◆ Existing Baggage Canopy/Entrance Closure																											
PM1040		Existing Baggage Canopy/Entrance Re-Open	0	0		08-Mar-24 A			◆ Existing Baggage Canopy/Entrance Re-Open																											
PM1080		Existing Ticketing Canopy/Entrance Closure	0	0	11-Mar-24 A				◆ Existing Ticketing Canopy/Entrance Closure																											
PM1050		Existing Main Ent. Canopy/Entrance Closure	0	0	21-Mar-24 A				◆ Existing Main Ent. Canopy/Entrance Closure																											
PM1070		Existing Main Ent. Canopy/Entrance Re-Open	0	0		29-Mar-24 A			◆ Existing Main Ent. Canopy/Entrance Re-Open																											
PM1090		Existing Ticketing Canopy/Entrance Re-Open	0	0		29-Mar-24 A			◆ Existing Ticketing Canopy/Entrance Re-Open																											
PM1060		Public Parking Partial Closure	0	0	15-Jul-24 A				◆ Public Parking Partial Closure																											
PM1110		Traffic Shift to Outside West/South Entrance Road Realignment	0	0		15-Jul-24 A			◆ Traffic Shift to Outside West/South Entrance Road Realignment																											
PM1130		Traffic Shift to North Lanes Entrance Road Realignment	0	0		18-Nov-24 A			◆ Traffic Shift to North Lanes Entrance Road Realignment																											
PM1120		East Airside Gate #32 Closure	0	0		13-Dec-24 A			◆ East Airside Gate #32 Closure																											
PM1180		Dry In	0	0		22-Mar-25 A			◆ Dry In																											
PM1140		Public Parking Re-Open	0	0		17-Jun-25	52	157	◆ Public Parking Re-Open																											



IMPORTANT COORDINATION ITEMS

- ❖ Continue re-routing passengers through construction zones
- ❖ Approve interior graphics, light fixtures and accessories
- ❖ Begin parking lot study and prep gate locations
- ❖ Paving, interior floor sample, painting and utility hook up and testing
- ❖ Public art selection committee will select winning entry



- 
- EXTERIOR SIDING
 - HIGH CEILING SHEET ROCK
 - INTERIOR WIRING AND UTILITY CONNECTION
 - JET BRIDGE ARRIVAL AND INSTALLATION

NEAR-TERM LOOK-AHEAD

Coming soon...

